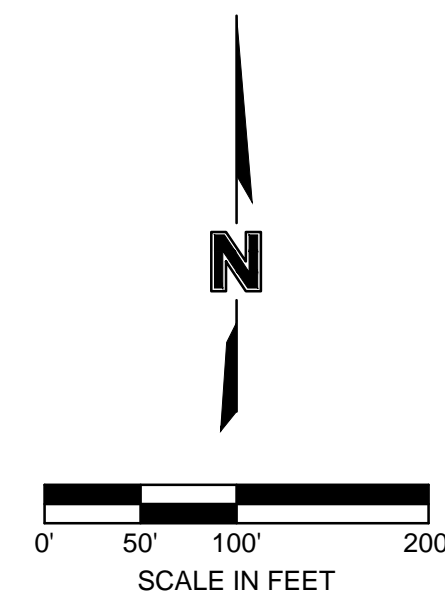
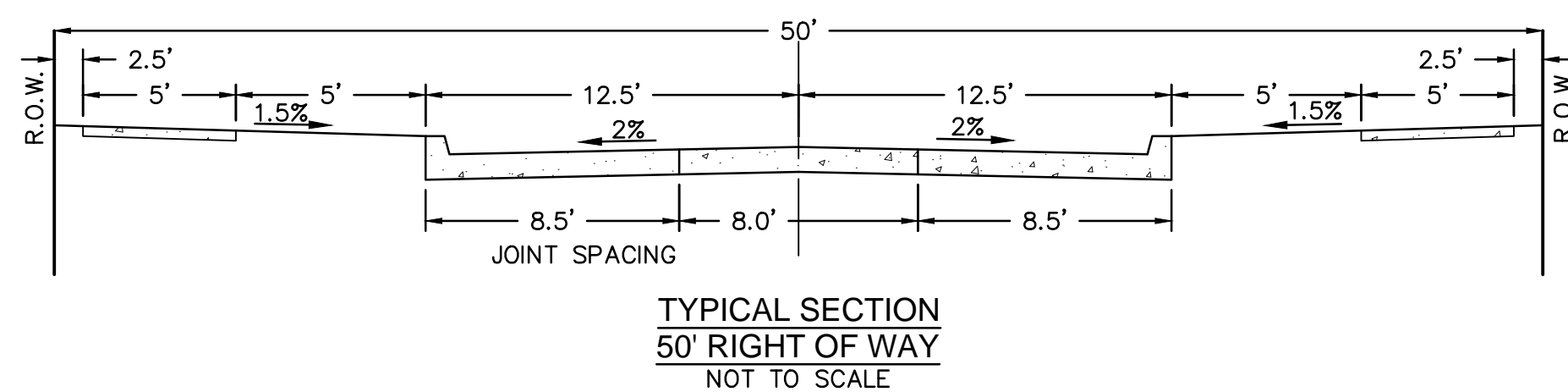
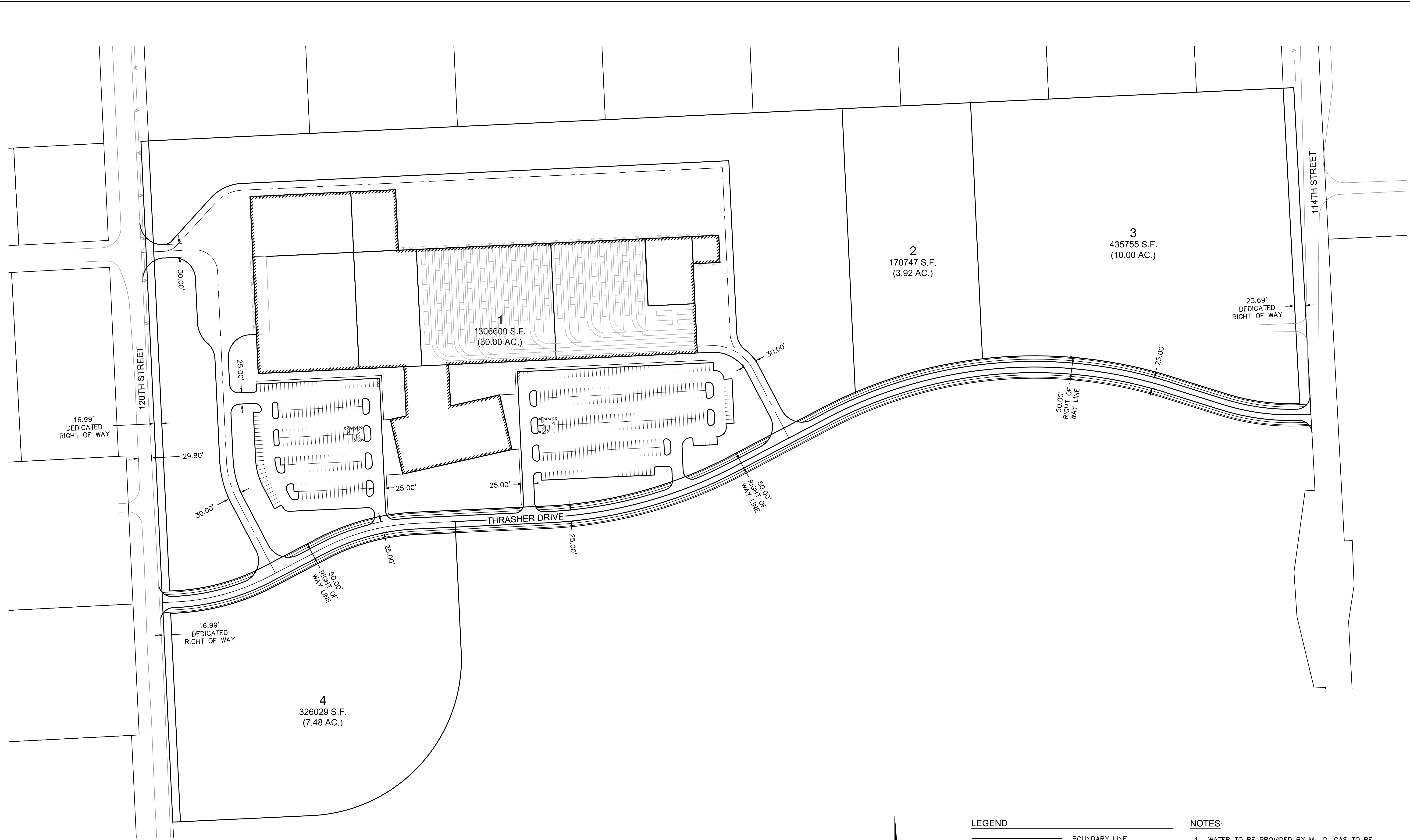


DWG: F:\Projects\015-2843\0-Design\AutoCAD\ Preliminary Plans\Sheets\DWG\C-STL-52843.dwg  
 DATE: Feb 12, 2016 11:24am  
 USER: cskken  
 C:\BASE\_52843  
 C:\PBDY\_52843  
 C:\BLK\_52843  
 C:\BASE\_52843



**LEGEND**

- BOUNDARY LINE
- - - EXISTING PROPERTY LINE
- - - EXISTING EASEMENT LINE
- - - SECTION LINE
- SECTION CORNER
- SS — SANITARY SEWER
- SD — STORM SEWER
- W — WATER LINE
- P-UG — UNDERGROUND POWER
- P-OH — OVERHEAD POWER
- GAS — GAS LINE

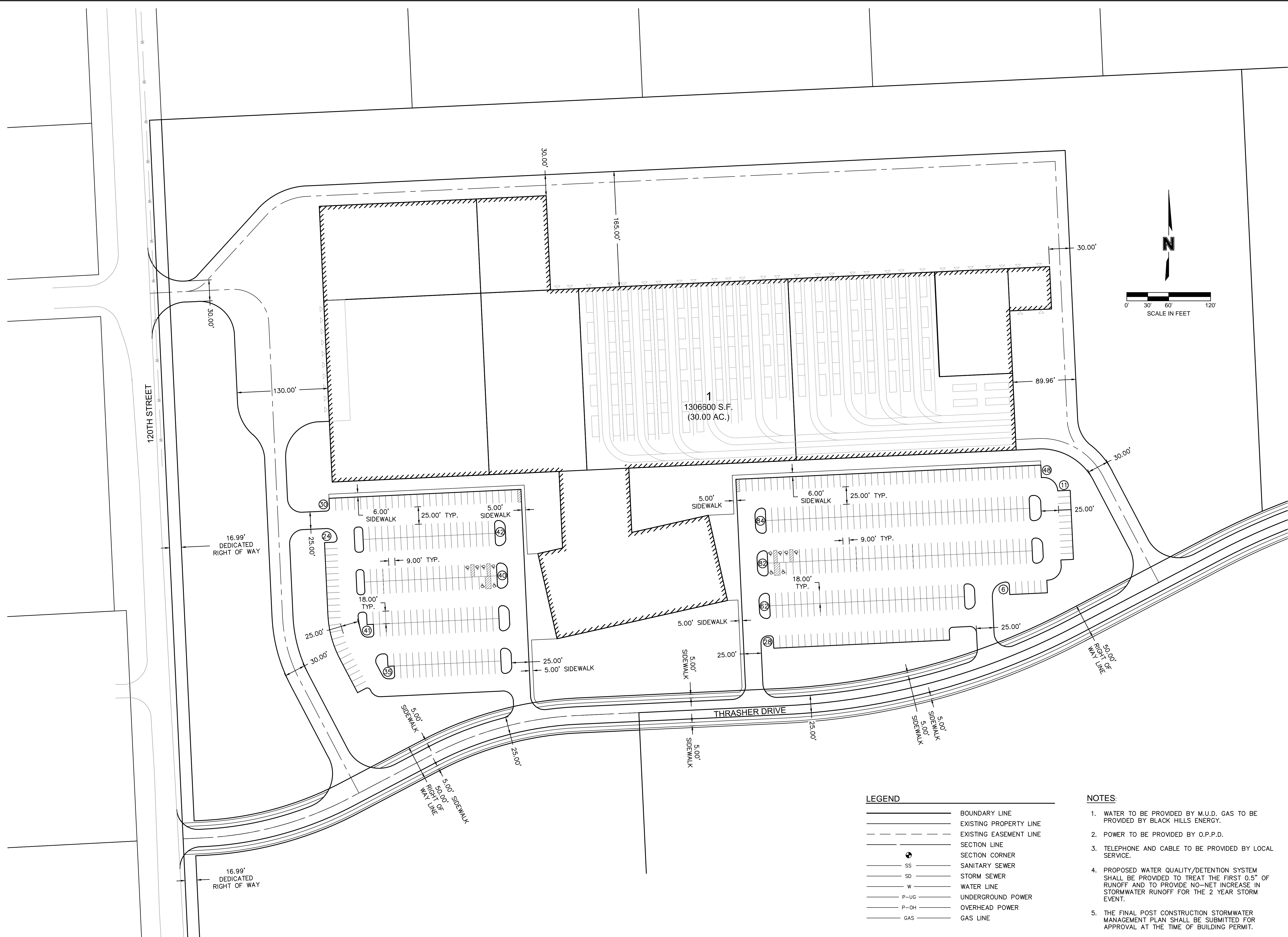
**NOTES:**

1. WATER TO BE PROVIDED BY M.U.D. GAS TO BE PROVIDED BY BLACK HILLS ENERGY.
2. POWER TO BE PROVIDED BY O.P.P.D.
3. TELEPHONE AND CABLE TO BE PROVIDED BY LOCAL SERVICE.
4. PROPOSED WATER QUALITY/DETENTION SYSTEM SHALL BE PROVIDED TO TREAT THE FIRST 0.5" OF RUNOFF AND TO PROVIDE NO-NET INCREASE IN STORMWATER RUNOFF FOR THE 2 YEAR STORM EVENT.
5. THE FINAL POST CONSTRUCTION STORMWATER MANAGEMENT PLAN SHALL BE SUBMITTED FOR APPROVAL AT THE TIME OF BUILDING PERMIT.
6. ALL DIMENSIONS ARE TO BACK OF CURB, UNLESS OTHERWISE NOTED.

REV. NO.	DATE	REVISIONS DESCRIPTION

PRELIMINARY SITE PLAN  
 PRELIMINARY PLAT  
 THRASHER ADDITION  
 120TH STREET AND CORNHUSKER ROAD  
 PAVILLION, NEBRASKA  
 2016

drawn by: CAS  
 checked by: KAR  
 approved by: ERG  
 QA/QC by: ERG  
 project no.: 015-2843  
 drawing no.:  
 date: 02.15.16



**LEGEND**

—	BOUNDARY LINE
- - -	EXISTING PROPERTY LINE
- - -	EXISTING EASEMENT LINE
- - -	SECTION LINE
⊙	SECTION CORNER
— SS	SANITARY SEWER
— SD	STORM SEWER
— W	WATER LINE
— P-UG	UNDERGROUND POWER
— P-OH	OVERHEAD POWER
— GAS	GAS LINE

- NOTES:**
1. WATER TO BE PROVIDED BY M.U.D. GAS TO BE PROVIDED BY BLACK HILLS ENERGY.
  2. POWER TO BE PROVIDED BY O.P.P.D.
  3. TELEPHONE AND CABLE TO BE PROVIDED BY LOCAL SERVICE.
  4. PROPOSED WATER QUALITY/DETENTION SYSTEM SHALL BE PROVIDED TO TREAT THE FIRST 0.5" OF RUNOFF AND TO PROVIDE NO-NET INCREASE IN STORMWATER RUNOFF FOR THE 2 YEAR STORM EVENT.
  5. THE FINAL POST CONSTRUCTION STORMWATER MANAGEMENT PLAN SHALL BE SUBMITTED FOR APPROVAL AT THE TIME OF BUILDING PERMIT.
  6. ALL DIMENSIONS ARE TO BACK OF CURB, UNLESS OTHERWISE NOTED.

**OLSSON ASSOCIATES**  
 2111 South 67th Street, Suite 200  
 Omaha, NE 68116  
 TEL: 402.341.1116  
 FAX: 402.341.5895  
 www.olssonassociates.com

PRELIMINARY ENLARGED SITE PLAN  
 PRELIMINARY PLAT  
 THRASHER ADDITION  
 120TH STREET AND CORNHUSKER ROAD  
 PAPILLION, NEBRASKA

REVISIONS

REV. NO.	DATE	REVISIONS DESCRIPTION

2016

SHEET  
C2.2