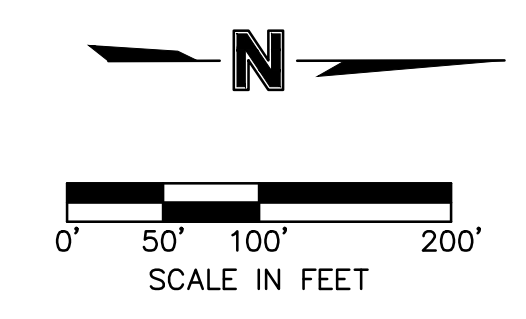
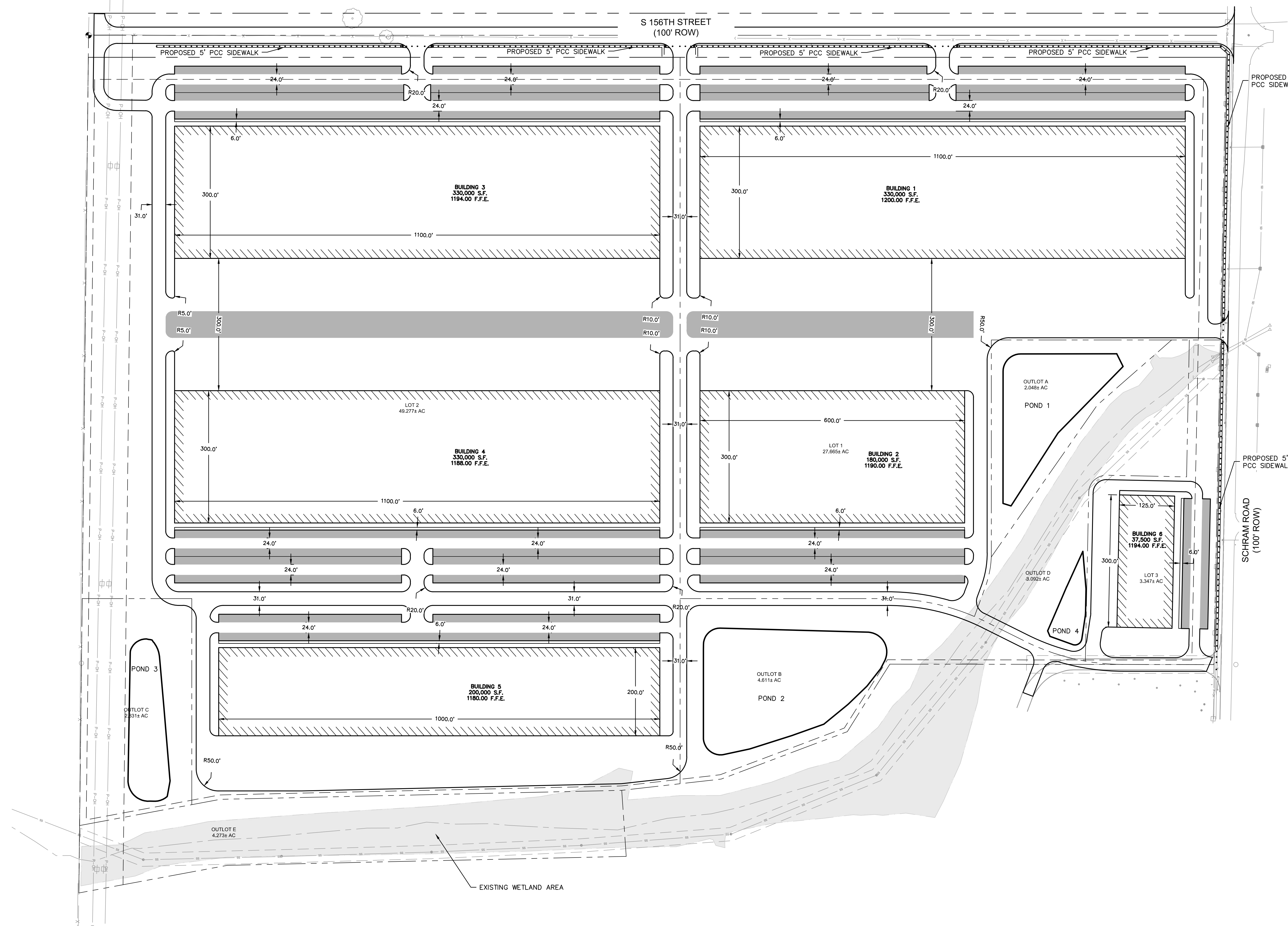


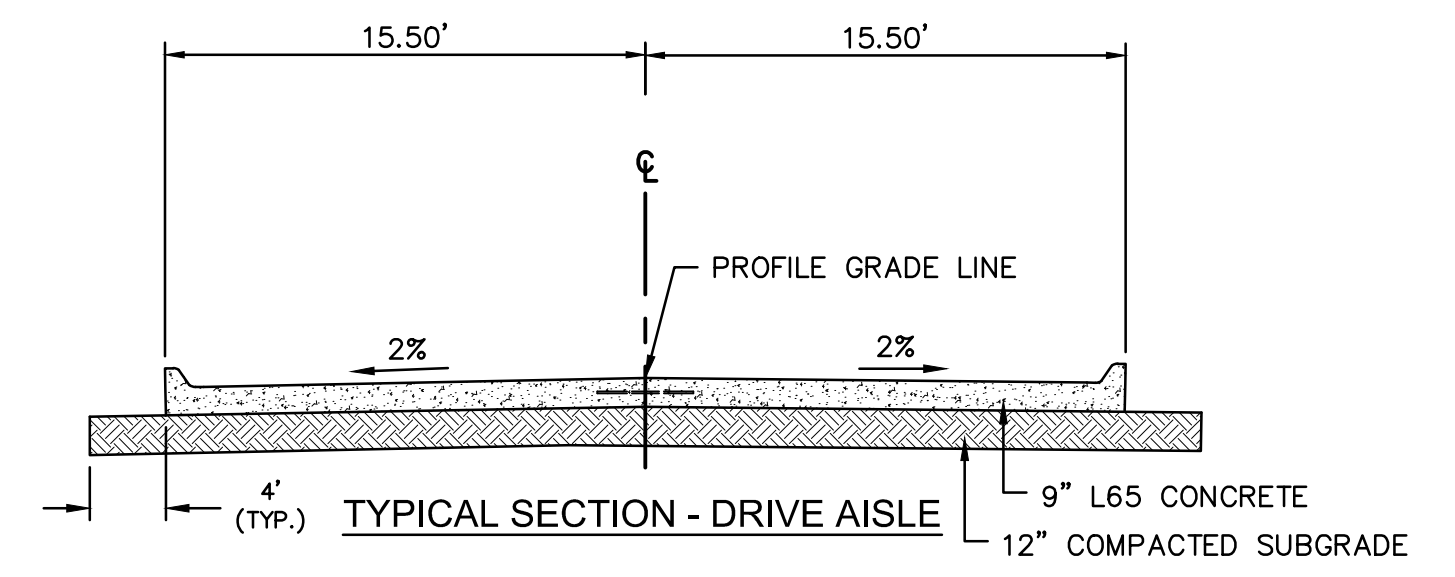
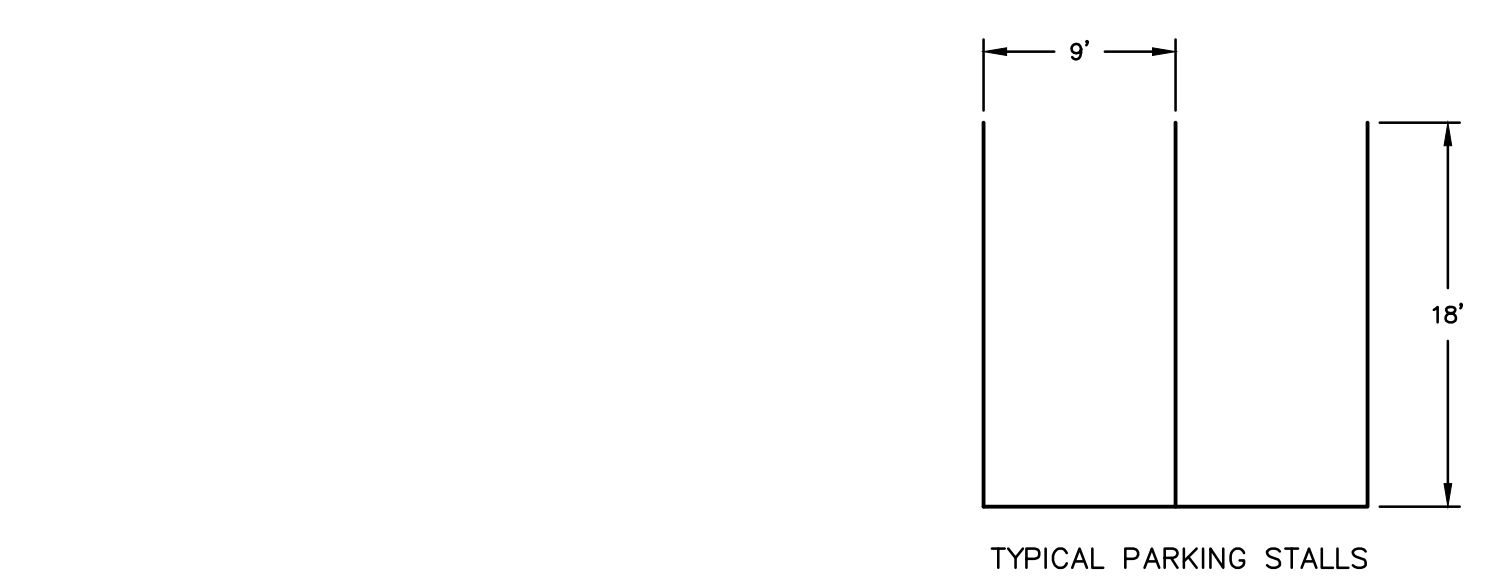
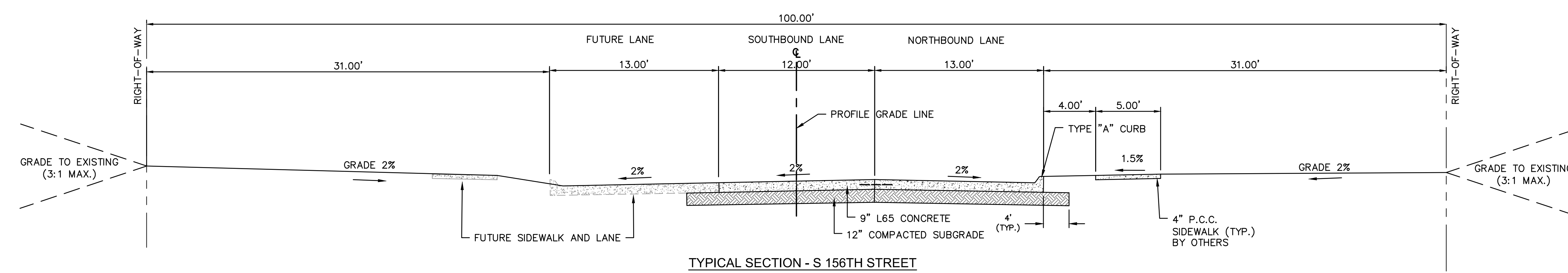
DWG: F:\2019\1501-2000\019-1764\10-Design\AutoCAD\Preliminary Plans\Sheets\NCVC\AC_SIT_0191764.dwg USER: jvelo
 DATE: May 21, 2020 12:14pm XREFS: C:\BASE_0191764 C:\PBLK_0191764 C:\PBDY_US_0191764



LEGEND

	RIGHT OF WAY LINE
	EASEMENT/SETBACK LINE
	PROPERTY LINE
	EXISTING CURB AND GUTTER
	PROPOSED CURB AND GUTTER
	SETBACK LINE
	PROPOSED BUILDING OUTLINE
	PROPOSED SIDEWALK
	PROPOSED DETENTION BASIN
	PROPOSED PARKING
	ADA PATH

- NOTES:**
1. FLOWLINE RADII ARE 15' UNLESS NOTED OTHERWISE.
 2. SIDEWALK WIDTHS ARE 5' UNLESS NOTED OTHERWISE.
 3. ALL ROADWAY DIMENSIONS ARE TO BACK OF CURB UNLESS NOTED OTHERWISE.
 4. ACCESS RADII ARE 30' UNLESS NOTED OTHERWISE.



olsson
 211 South 67th Street, Suite 200
 Omaha, NE 68106
 TEL 402.341.1116
 www.olsson.com

REV. NO.	DATE	REVISIONS DESCRIPTION

PRELIMINARY SITE PLAN
R&R COMMERCE PARK SOUTH

2020
 PAVILLION, NE

drawn by: JAV	checked by: KGG	date: JAN
approved by: KMS	checked by: KMS	date: FEB
project no.: 019-1764	drawing no.:	date:

SHEET
C3.1