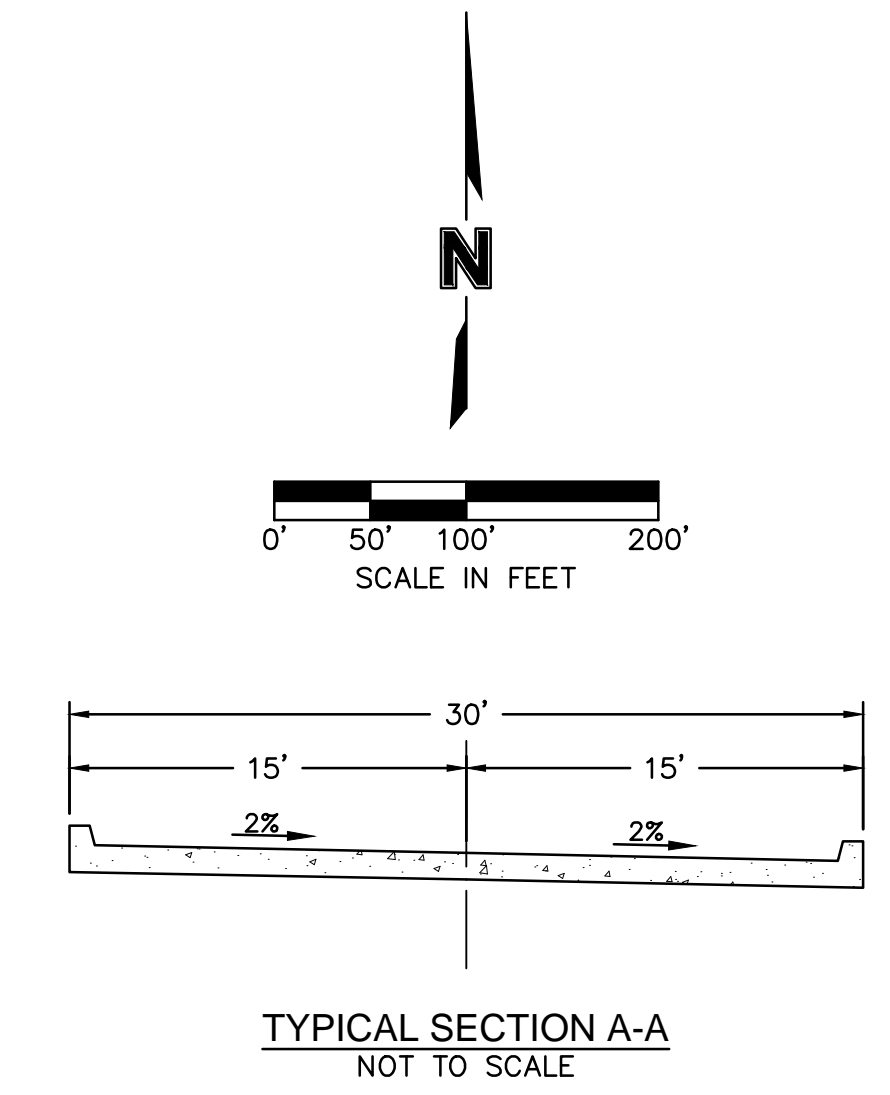
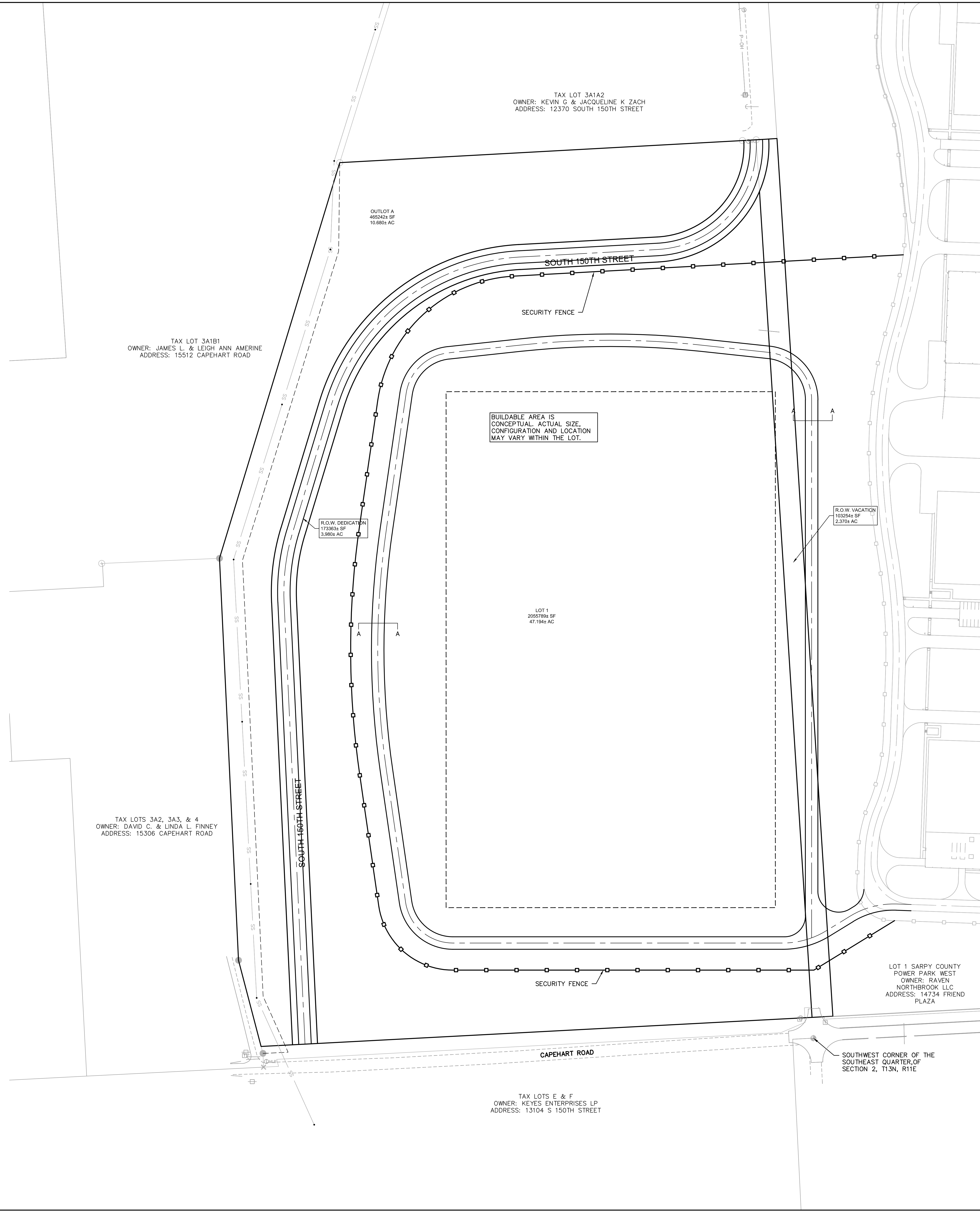


DWG: F:\2018\3501-4000\018-3534\40-design\AutoCAD\preliminary plans\Sheets\GNVC\AC_SIT_0183534.dwg
 DATE: Dec 17, 2018 10:54am XREFS: C:\TBLK_0183534 C:\BASE_0183534 C:\XBNIDY_0183534 C:\PBASE_0183534 C:\PINDY_0183534
 USER: prlewohner
 C:\PBASE_0183534



ZONING SETBACK TABLE

FRONT	25'
INTERIOR SIDE	10'
STREET SIDE	25'
REAR	10'

LEGEND

---	BOUNDARY LINE
---	EXISTING PROPERTY LINE
---	EXISTING EASEMENT LINE
---	SECTION LINE
+	SECTION CORNER
SS	SANITARY SEWER
SD	STORM SEWER
W	WATER LINE
P-UG	UNDERGROUND POWER
P-OH	OVERHEAD POWER
GAS	GAS LINE
FM	FORCE MAIN

- NOTES:
1. WATER TO BE PROVIDED BY M.U.D. GAS TO BE PROVIDED BY BLACK HILLS ENERGY.
 2. POWER TO BE PROVIDED BY O.P.P.D.
 3. TELEPHONE AND CABLE TO BE PROVIDED BY LOCAL SERVICE.
 4. PROPOSED WATER QUALITY/DETENTION SYSTEM SHALL BE PROVIDED TO TREAT THE FIRST 0.5" OF RUNOFF AND TO PROVIDE NO-NET INCREASE IN STORMWATER RUNOFF FOR THE 2 YEAR STORM EVENT.
 5. THE FINAL POST CONSTRUCTION STORMWATER MANAGEMENT PLAN SHALL BE SUBMITTED FOR APPROVAL AT THE TIME OF BUILDING PERMIT.
 6. ALL DIMENSIONS ARE TO BACK OF CURB, UNLESS OTHERWISE NOTED.

olsson
 211 South 67th Street, Suite 200
 Omaha, NE 68106
 TEL: 402.341.1116
 FAX: 402.341.5885
 www.olson.com

REVISIONS

REV. NO.	DATE	REVISION DESCRIPTION

2018

PRELIMINARY SITE PLAN
 PRELIMINARY PLAT
 SARPY COUNTY POWER PARK
 144TH STREET AND CAPEHART ROAD
 PAPPILLION, NEBRASKA

drawn by: DNE/PM
 checked by: KAS
 approved by: ELG
 GNOC by: ELG
 project no.: 018-3534
 drawing no.:
 date: 12.17.18

SHEET
 C2.2