

BITTING - NYE

LOT 1

BEING A PLATTING OF TAX LOT 3, LOCATED IN THE NE 1/4 OF THE NW 1/4 OF SECTION 34, T14N, R12E OF THE 6th P.M., SARPY COUNTY, NEBRASKA.

ACKNOWLEDGEMENT OF NOTARY

STATE OF NEBRASKA)
COUNTY OF SARPY)
THE FOREGOING DEDICATION WAS ACKNOWLEDGED BEFORE ME THIS ____ DAY OF _____, 20__ BY
AMANDA J. NYE.

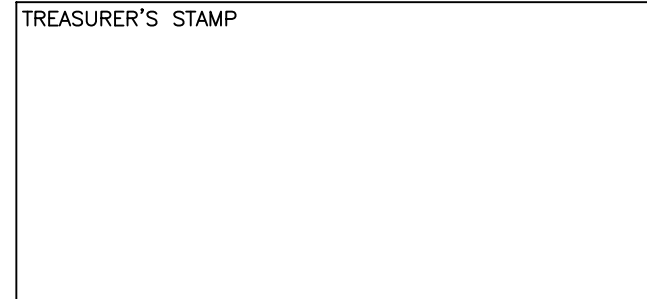
NOTARY PUBLIC

SARPY COUNTY TREASURER'S CERTIFICATE

I HEREBY CERTIFY THAT THE RECORDS OF MY OFFICE SHOW NO TAXES DUE OR DELINQUENT UPON THE LAND DESCRIBED IN THE SURVEYOR'S CERTIFICATE AS APPEARS ON THIS PLAT AS OF THIS ____ DAY OF _____, 20__.

SARPY COUNTY TREASURER

TREASURER'S STAMP



APPROVAL BY PAPIILLION CITY PLANNING COMMISSION

THIS PLAT OF BITTING-NYE WAS APPROVED BY THE PAPIILLION CITY PLANNING COMMISSION, OF THE CITY OF PAPIILLION, NEBRASKA ON THIS ____ DAY OF _____, 20__.

REBECCA HOCH, CHAIRPERSON

APPROVAL BY PAPIILLION CITY ENGINEER

THIS PLAT OF BITTING-NYE WAS APPROVED BY THE PAPIILLION CITY ENGINEER OF THE CITY OF PAPIILLION, NEBRASKA ON THIS ____ DAY OF _____, 20__.

JEFFREY L. THOMPSON, PE, CPESC, CFM
PAPIILLION CITY ENGINEER

APPROVAL OF PAPIILLION CITY COUNCIL

THIS PLAT OF BITTING-NYE WAS APPROVED AND ACCEPTED BY BY THE PAPIILLION CITY COUNCIL, OF THE CITY OF PAPIILLION, NEBRASKA ON THIS ____ DAY OF _____, 20__, IN ACCORDANCE WITH THE STATE STATUTES OF NEBRASKA.

NICOLE BROWN, CITY CLERK

DAVID P. BLACK, MAYOR

SURVEYOR'S CERTIFICATE

I HEREBY CERTIFY THAT I HAVE MADE A BOUNDARY SURVEY OF THE SUBDIVISION DESCRIBED HEREIN AND THAT PERMANENT MARKERS HAVE BEEN FOUND OR SET AT ALL CORNERS OF SAID BOUNDARY AND AT ALL LOT CORNERS WITHIN SAID SUBDIVISION TO BE KNOWN AS BITTING-NYE, LOT 1, BEING A REPLATTING OF TAX LOT 3 LOCATED IN THE NE 1/4 OF THE NW 1/4 OF SECTION 34, T14N, R12E OF THE 6th P.M., SARPY COUNTY, NEBRASKA, DESCRIBED AS FOLLOWS, BEGINNING AT THE SW CORNER OF SAID TAX LOT 3; THENCE NORTH (ASSUMED BEARING) 130.15 FEET ON THE WEST LINE OF SAID TAX LOT 3 TO THE NW CORNER THEREOF; THENCE S89°52'16"E 670.66 FEET ON THE NORTH LINE OF SAID TAX LOT 3, TO THE NE CORNER THEREOF; THENCE S00°16'10"W 130.12 FEET ON THE EAST LINE OF SAID TAX LOT 3 TO THE SE CORNER THEREOF; THENCE N89°52'25"W 670.05 FEET ON THE SOUTH LINE OF SAID TAX LOT 3 TO THE POINT OF BEGINNING.

CONTAINING 87,236 SQUARE FEET OR 2.003 ACRES

OCTOBER 13, 2017
DATE:

DEDICATION

KNOW ALL MEN BY THESE PRESENTS: THAT I, AMANDA J. NYE, OWNER OF THE PROPERTY DESCRIBED IN THE ABOVE SURVEYOR'S CERTIFICATE AND EMBRACED WITHIN THIS PLAT, HAVE CAUSED SAID LAND TO BE SUBDIVIDED INTO A LOT AND A STREET, TO BE NUMBERED AND NAMED AS SHOWN, SAID SUBDIVISION TO BE HEREAFTER KNOWN AS BITTING-NYE, AND I DO HEREBY RATIFY AND APPROVE OF THE DISPOSITION OF MY PROPERTY AS SHOWN ON THIS PLAT AND I HEREBY DEDICATE TO THE PUBLIC, FOR PUBLIC USE, THE STREET AS SHOWN HEREON AND I HEREBY GRANT A PERPETUAL EASEMENT TO THE OMAHA PUBLIC POWER DISTRICT, CENTURYLINK QC AND ANY COMPANY WHICH HAS BEEN GRANTED A FRANCHISE TO PROVIDE A CABLE TELEVISION SYSTEM IN THE AREA TO BE SUBDIVIDED, THEIR SUCCESSORS AND ASSIGNS, TO ERECT, OPERATE, MAINTAIN, REPAIR, AND RENEW POLES, WIRES, CROSSARMS, DOWN GUYS AND ANCHORS, CABLES, CONDUITS AND OTHER RELATED FACILITIES AND TO EXTEND THEREON WIRES OR CABLES FOR THE CARRYING AND TRANSMISSION OF ELECTRIC CURRENT FOR LIGHT, HEAT, AND POWER FOR THE TRANSMISSION OF SIGNALS AND SOUNDS OF ALL KINDS AND THE RECEPTION THEREOF, INCLUDING SIGNALS PROVIDED BY A CABLE TELEVISION SYSTEM AND THEIR RECEPTION, ON, OVER, THROUGH, UNDER AND ACROSS A FIVE (5') FOOT WIDE STRIP OF LAND ABUTTING THE FRONT AND SIDE LOT LINES AND AN EIGHT (8') FOOT WIDE STRIP OF LAND ABUTTING THE REAR LINE.

I DO FURTHER GRANT PERPETUAL EASEMENTS TO THE CITY OF PAPIILLION AND BLACK HILLS/NEBRASKA GAS UTILITY, LLC, THEIR SUCCESSORS AND ASSIGNS, TO ERECT, INSTALL, OPERATE, MAINTAIN, REPAIR AND RENEW, PIPELINES, HYDRANTS, VALVES AND OTHER RELATED FACILITIES AND TO EXTEND THEREON PIPES FOR THE TRANSMISSION OF GAS AND WATER ON, THROUGH, UNDER AND ACROSS A FIVE (5') FOOT WIDE STRIP OF LAND ABUTTING THE FRONT LOT LINE. NO PERMANENT BUILDINGS, TREES, RETAINING WALLS OR LOOSE ROCK WALLS SHALL BE PLACED IN SAID EASEMENT WAYS, BUT THE SAME WAY BE USED FOR GARDENS, SHRUBS, LANDSCAPING, SIDEWALKS, DRIVEWAYS AND OTHER PURPOSES THAT DO NOT THEN OR LATER INTERFERE WITH AFORESAID USES OR RIGHTS HEREIN GRANTED.



JAMES D. WARNER
NEBRASKA RLS 308

REVIEW BY THE SARPY COUNTY PUBLIC WORKS
THIS PLAT OF BITTING-NYE WAS REVIEWED BY THE SARPY COUNTY SURVEYOR'S OFFICE THIS ____ DAY OF _____, 20__.

COUNTY SURVEYOR/ENGINEER

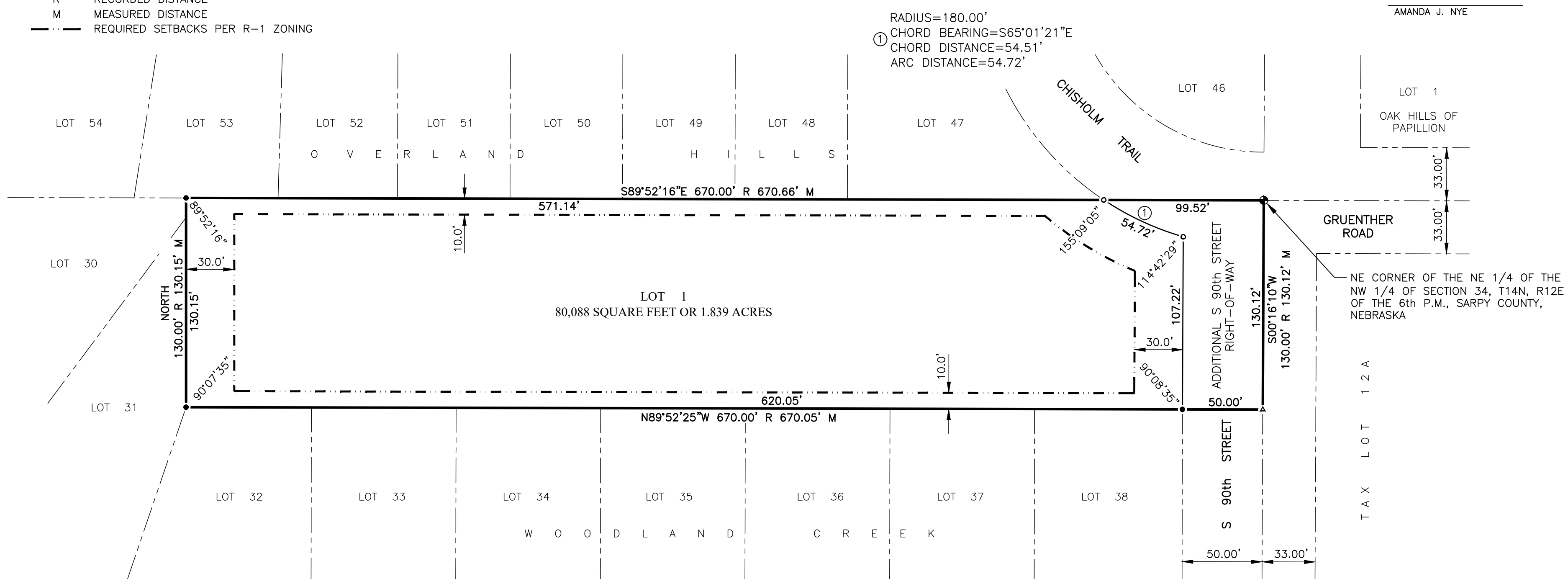
NOTES

- ANGLES SHOWN ADJACENT TO CURVES ARE MEASURED TO THE CHORD LINE OF SAID CURVE.
- DIRECT ACCESS TO S 90th STREET IS PROHIBITED.

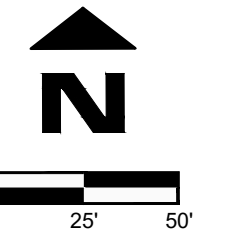
LEGEND

- CORNERS FOUND (5/8" REBAR)
- CORNERS SET (5/8" REBAR W/CAP #308)
- ▲ TEMPORARY POINT
- R RECORDED DISTANCE
- M MEASURED DISTANCE
- REQUIRED SETBACKS PER R-1 ZONING

RADIUS=180.00'
① CHORD BEARING=S65°01'21"E
CHORD DISTANCE=54.51'
ARC DISTANCE=54.72'



BITTING - NYE
LOT 1



Revision Dates

No.	Description	MM-DD-YY

Job No.: A181-17-18A
Drawn By: RJR
Reviewed By: JDW
Date: OCTOBER 13, 2017
Papillion Book: 37
Pages: 1 & 2

Sheet Title

CITY OF PAPIILLION
FINAL PLAT

Sheet Number

SHEET 1 OF 1