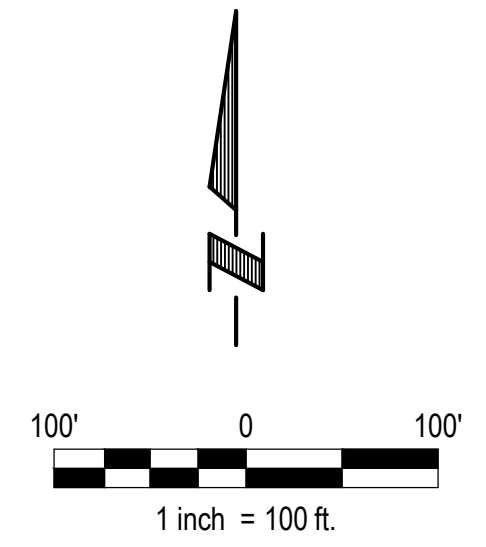


NORTH SHORE COMMERCIAL

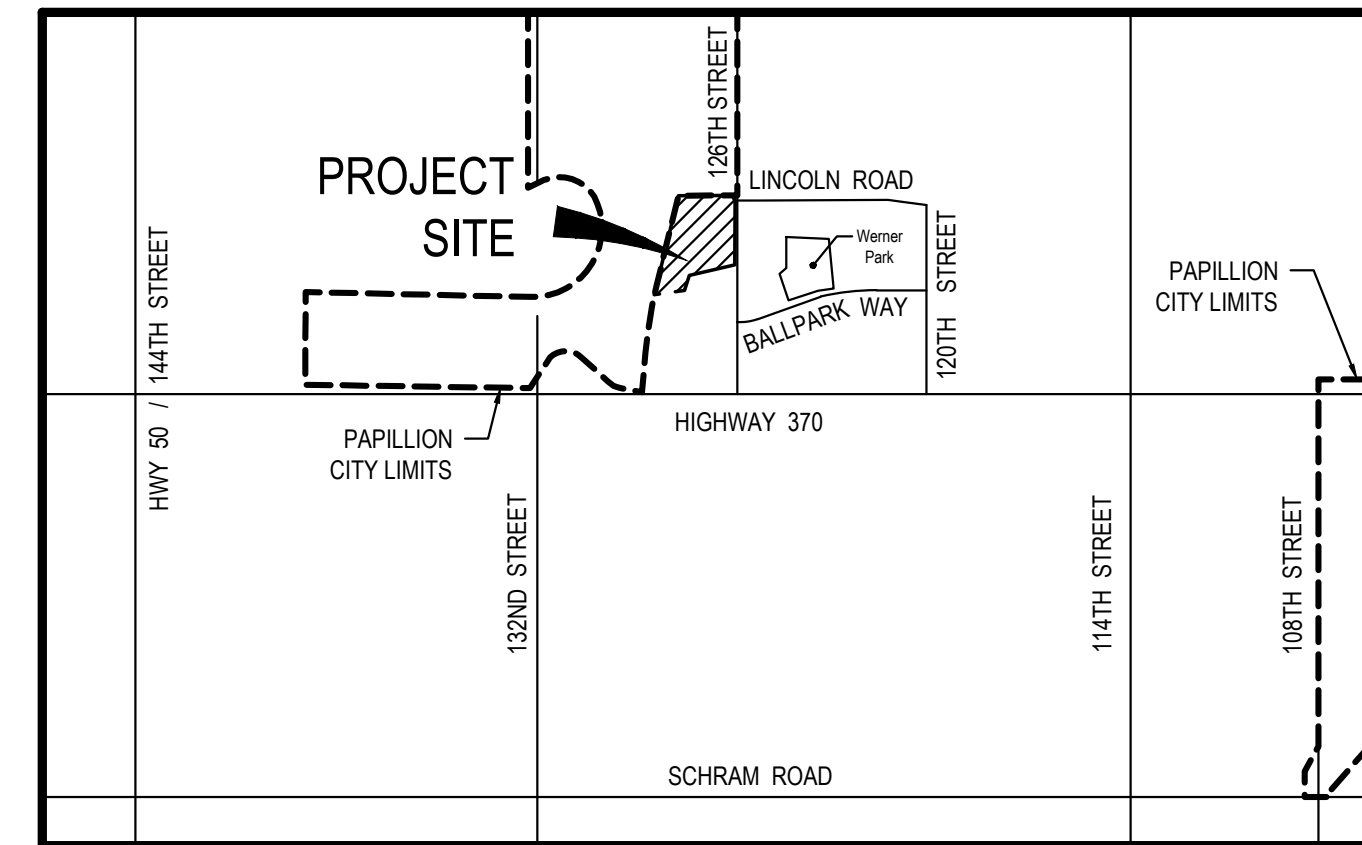
LOTS 1 - 70 INCLUSIVE & OUTLOTS "A" - "F"

BEING A REPLATTING OF ALL OF LOTS 1 THRU 3, HENRY'S HIGHLANDS REPLAT 1, A SUBDIVISION LOCATED IN THE SW1/4 OF SECTION 30, TOGETHER WITH PART OF NE1/4 OF THE SW1/4 AND THE SE1/4 OF THE SW1/4 OF SECTION 30, ALL LOCATED IN TOWNSHIP 14 NORTH, RANGE 12 EAST OF THE 6TH P.M., SARPY COUNTY, NEBRASKA.

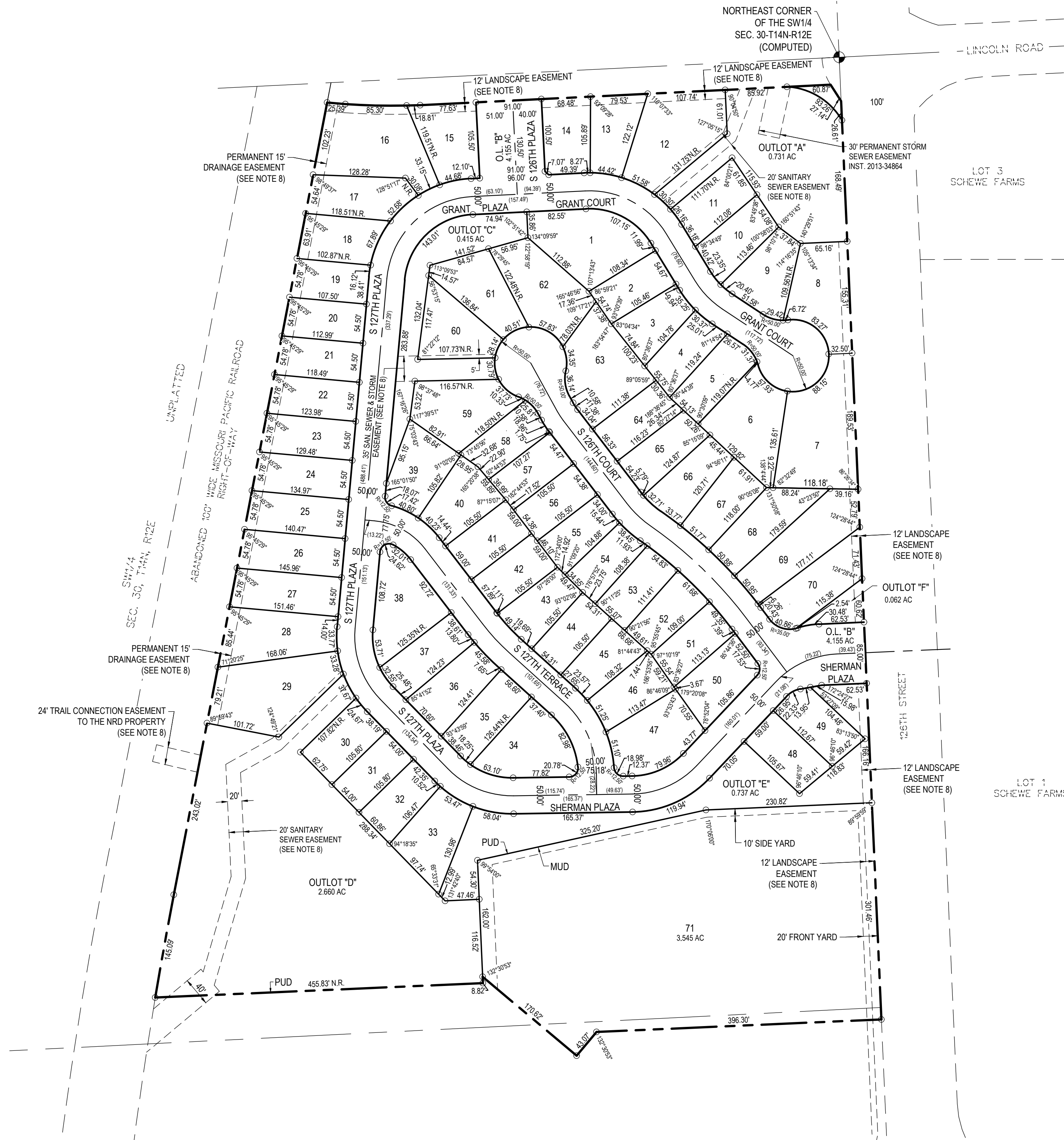
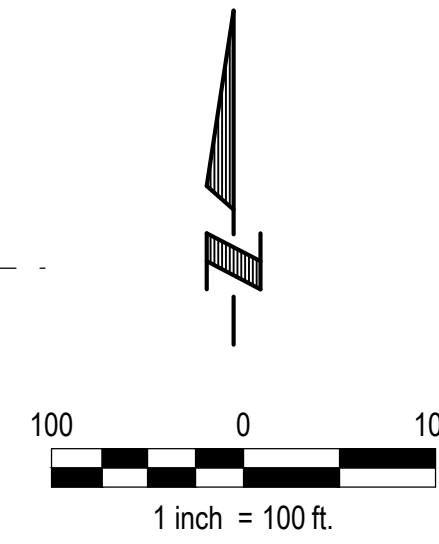


LEGEND

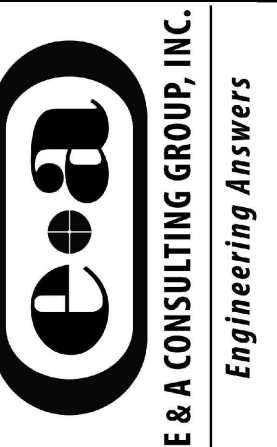
- BOUNDARY LINE
- RIGHT OF WAY LINE
- LOT LINE
- EASEMENTS
- EXIST. SECTION CORNER
- EXIST. SECTION LINES
- EXIST. PROPERTY LINES
- 5/8" REBAR SET WITH CAP #LS-608



VICINITY MAP



E & A CONSULTING GROUP, INC.
 Engineering • Planning • Environmental & Field Services



NORTH SHORE COMMERCIAL
 LOTS 1 THRU 70 INCLUSIVE & OUTLOTS A-F

EXHIBIT "A"
FINAL PLAT

Revisions	
No.	Description

Proj No.:	P2014.202.001
Date:	10-15-16
Designed By:	JMT
Drawn By:	TRH
Scale:	1"=100'
Sheet:	1 of 1

Terry Hansen 10/13/2016 4:41 AM K:\Project\2014202\901\Plat\Final Design\FINAL PLAT EXHIBIT A.dwg